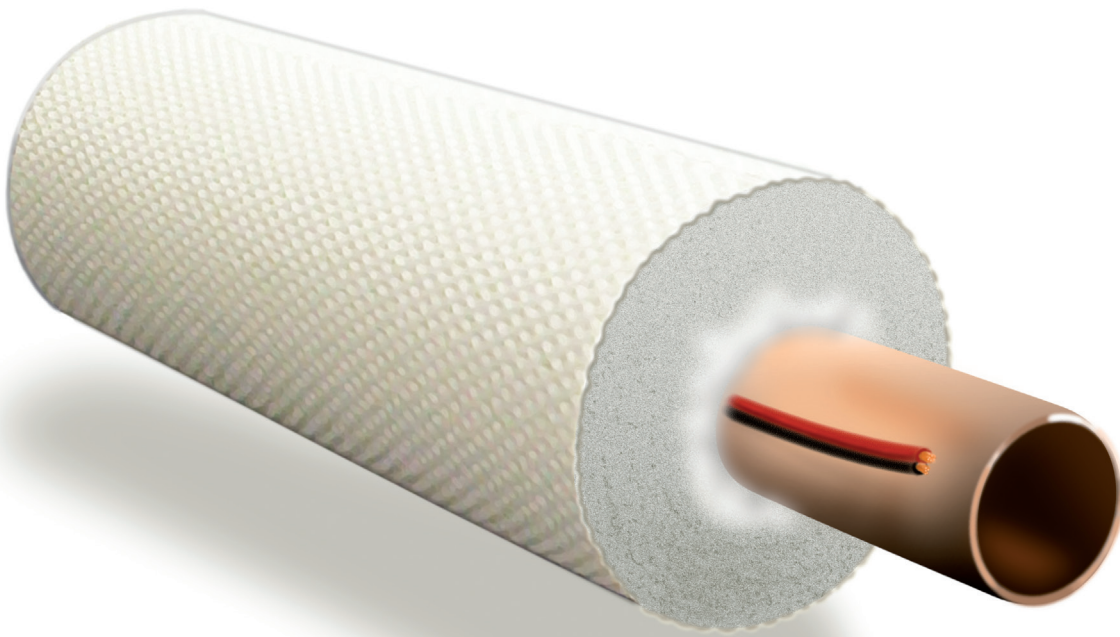
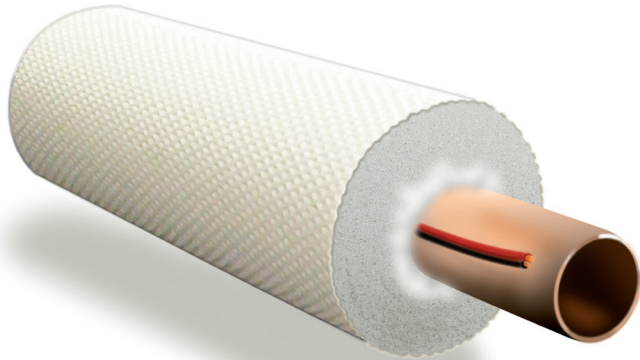




TROCELLEN SOLAR SLEEVES

datasheet





PROPERTIES

| | |
|------------------------|---|
| Temperature resistance | 200°C (peak); 170°C (operating) |
| Material | Closed cell cross-linked polyethylene and polyester non-woven |
| Electric wire | Silicone insulated 2 x 0.75 mm ² |
| Insulating properties | λ value: 0.036 W/mK at 10°C (combined) |
| Water permeability | μ value: >7,000 |
| UV resistance | Minimum 1.5 years (EN ISO 4892-2/06) |
| Fire classification | M1 (Annex 2, 21 June 2002); CL1 (D.M. 26/06/84); B2 (DIN 4102/B2) |

SPECIFICATIONS

| SPECIFICATIONS | MONO | | | TWIN | |
|-------------------------------------|----------------|----------------|----------------|----------------|----------------|
| | 15 | 18 | 22 | 15 + 15 | 18 + 18 |
| Copper pipe ø (mm) | 15 | 18 | 22 | 15 + 15 | 18 + 18 |
| Insulation thickness (mm) | PE 8 PET 6 | PE 8 PET 6 | PE 14 PET 6 | PE 8 PET 6 | PE 8 PET 6 |
| SST pipe ø nom. (mm) ø ext. (mm) | 16 21.4 | 20 26.7 | 25 31.8 | 16 + 16 | 20 + 20 |
| Insulation thickness (mm) | PE 14 PET 6 | PE 14 PET 6 | PE 14 PET 6 | PE 14 PET 6 | PE 14 PET 6 |
| Roll length (m) | 10 / 15 / 25 | | | | |

Trocellen. Probably the longest lasting insulation material. Find out why Trocellen lasts longer than any other material at trocellen.com

Made of long lasting closed cell polyethylene insulation foam. Constant insulating value for at least 23 years*, probably longer.

Clean, non-toxic, mould and bacteria resistant, odorless, fire safe, and very economical. Doesn't absorb water.

Flexible enough to follow tight angles, and strong enough to withstand rough handling. Can be used indoors as well as outdoors.

*Trocellen tested after 23 years of operation found the same insulating value. Test reports available on request.